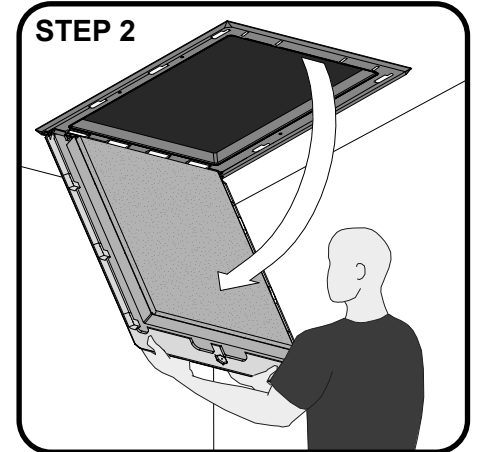
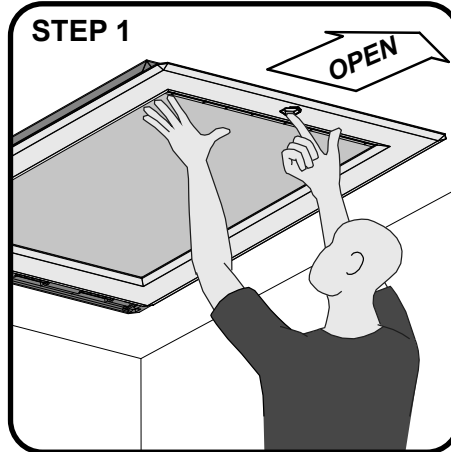


GL250 DROP DOWN LOFT DOOR - OPERATING INSTRUCTIONS

TO OPEN THE DOOR

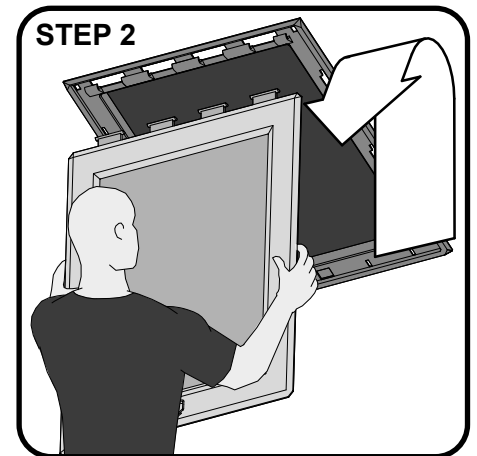
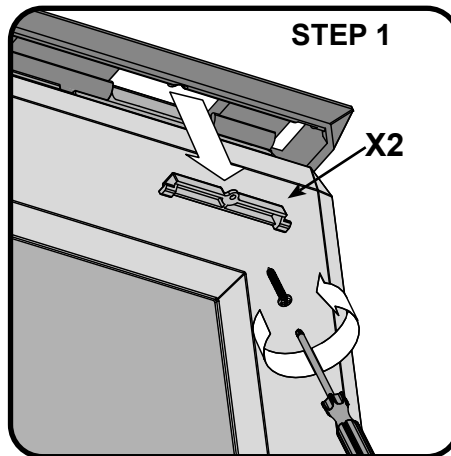
1. Slide outer frame on the door panel to the open position.
2. Supporting the weight of the door lower it down to vertical.

Do not allow the door panel to swing down unsupported.



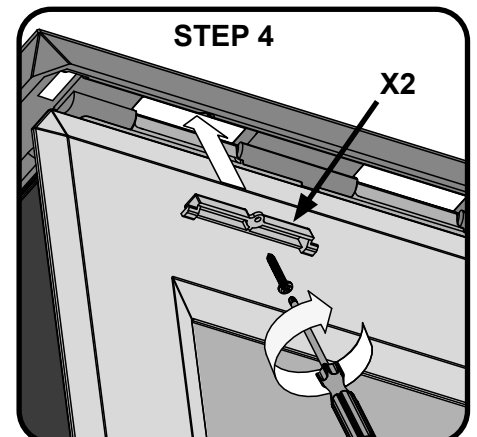
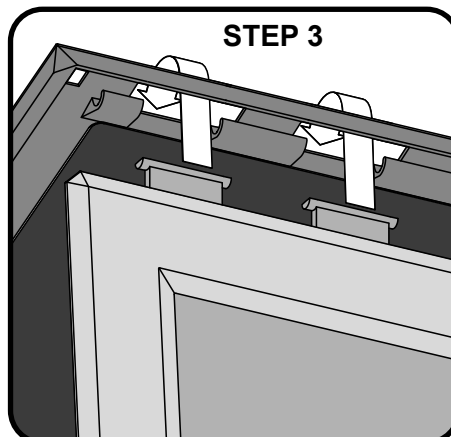
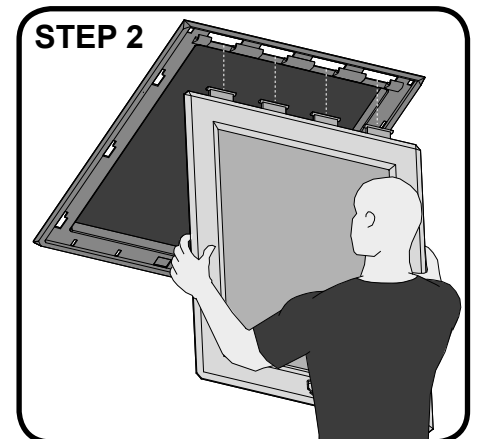
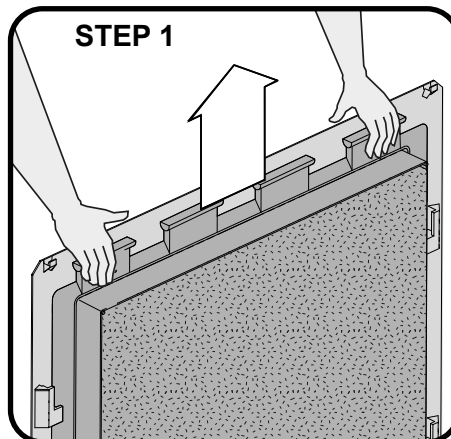
TO REMOVE THE DOOR

1. Unscrew and remove the green hinge blockers in the two outer hinge slots.
2. Unhook the door panel by lifting it up and away from the hinge channels in the frame. Then carefully set to one side.



TO FIT OR REFIT THE DOOR

1. The door panel is made from two components. Slide to expose the hinge lugs.
2. Position door at 90° to frame, keeping the hinge lugs exposed.
3. Lift the door up and over into position and hook the hinge lugs into the hinge channels.
4. Screw the green hinge blockers into the outer two hinge slots to secure the door.



Hinge blockers should be used to prevent the removal of door.

For an instructional video along with further fitting information visit us at www.manthorpebp.co.uk or scan the QR code below.

MBP_GU_1135_05



**THIS IS NOT A
STRUCTURAL
PRODUCT AND
MUST NOT BE
WALKED OR
STEPPED ON**