

Anchor Point

Expansion is commonly controlled by anchoring with a bracket at the allocated position on each fitting.

Flow Line

Polypipe Building Services have designed the upstream socket to be a clearance fit for expansion conversion. The downstream socket is an interference fit for a reliable homogenous solvent weld joint.

Another purpose for the arrow is to show the installer the correct way up of the fitting, particularly in a vertical installation, as the waste bosses have a built in fall.

The Terrain logo pad also indicates the direction of flow "always on top".



Unique Rim

The Terrain unique rim feature enables the fitting to be converted for expansion by solventing on the 109.4 ring seal adaptor.

Accommodation or expansion is necessary in a soil system, as the pipes and fittings are subjected to changes in ambient and discharge flow temperatures.

Boss Horn Connections

This product demonstrates boss horn connection, many Terrain fittings are designed with this for optional waste entry.

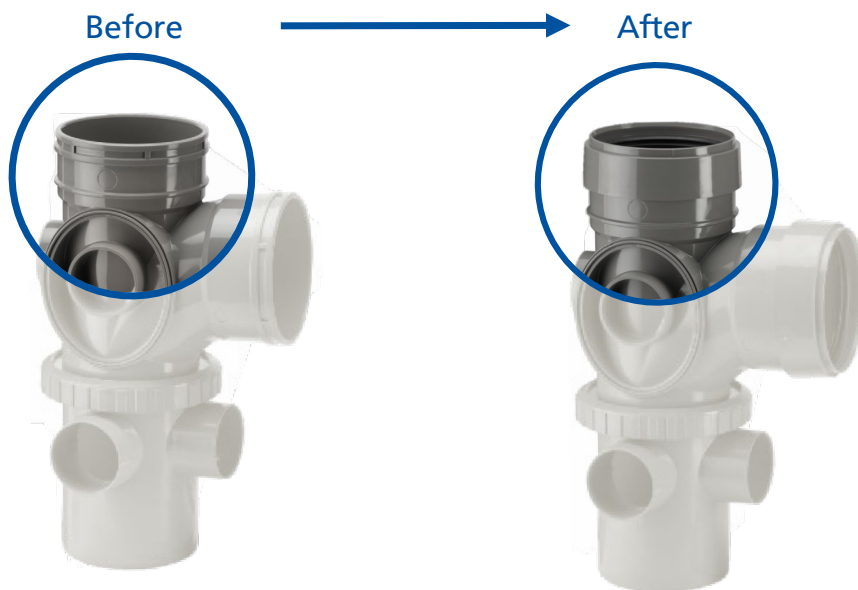
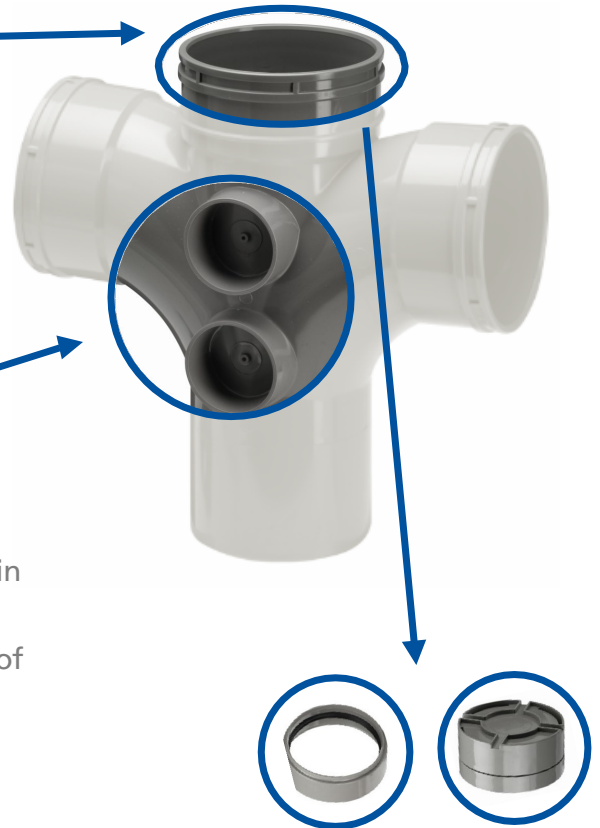
Centering Point moulded into fittings to enable safe drilling of BOSS.

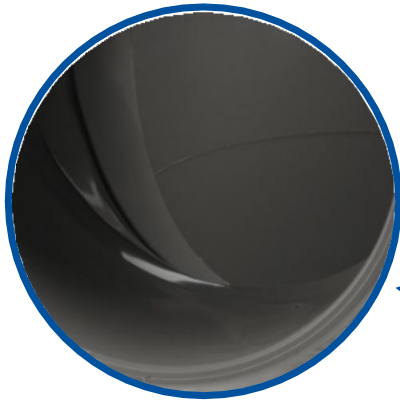
See Technical Bulletin 2018-3 for hole saw sizes.

Ring Seal Adaptor and Access Cap

These two fittings are both designed to be solvent welded onto the socket bead rim.

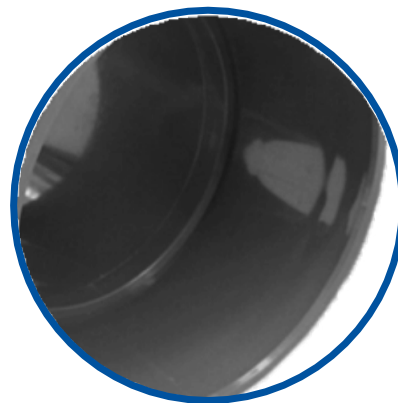
The 109.4 ring seal adaptor has an audible "click" when it has been pressed fully home.





Chamfered Root

All upstream sockets have a chamfered root of socket entry. This is to eliminate any chance of effluent build up.



The downstream socket shows a shoulder stop at the base, this is to help a solvent weld bead to form, thereby maximising the solvent welds performance.

The socket is also designed as an interference fit.

Products are tested to BS EN1329, BS 1055 and BS 4514



PDS_047 Version 1_Issued